

THERMO TECHNOLOGIES, LLC
400 EAST BROADWAY AVENUE, SUITE 50
BISMARCK, ND 58501 USA

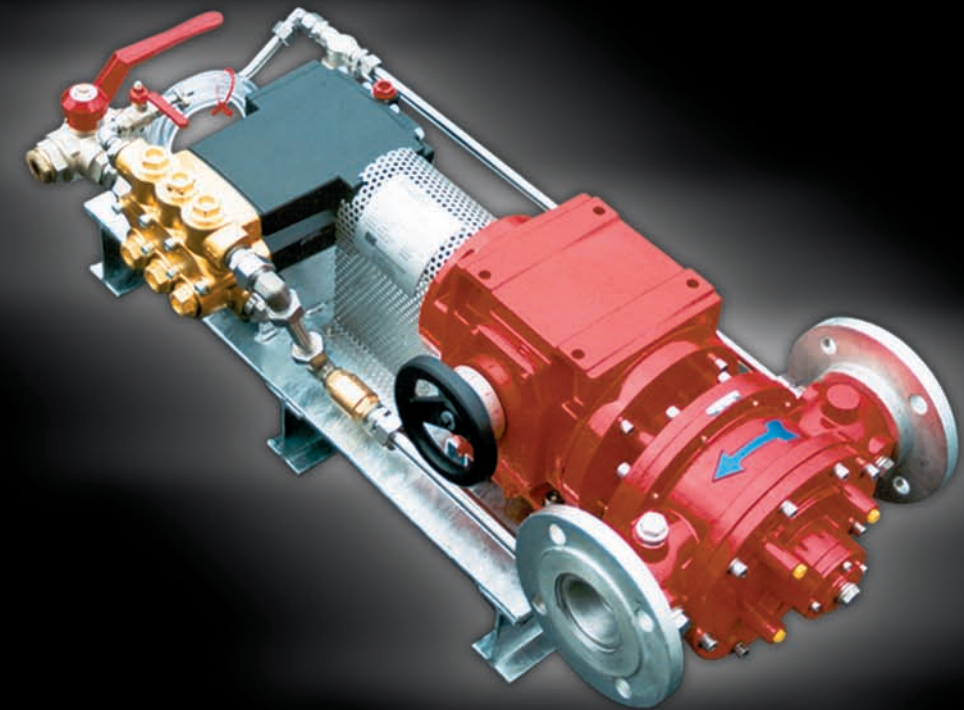
TEL: 701/258-8208
FAX: 701/258-7259

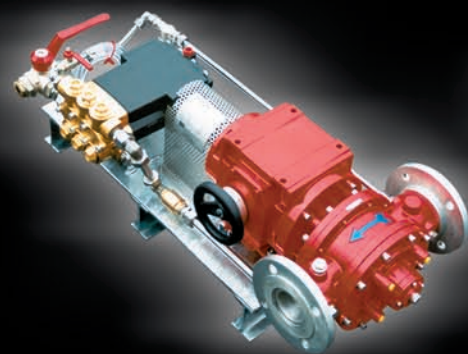
WWW.THERMO-GEL.COM

FireDos®

E F F E C T I V E F I R E F I G H T I N G

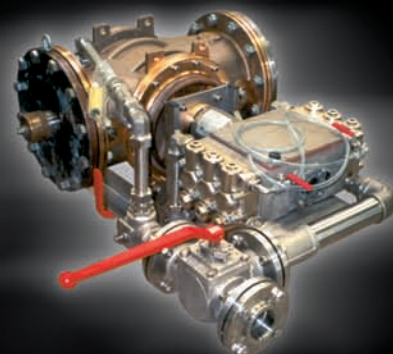
W A T E R D R I V E N : P R O P O R T I O N E R S





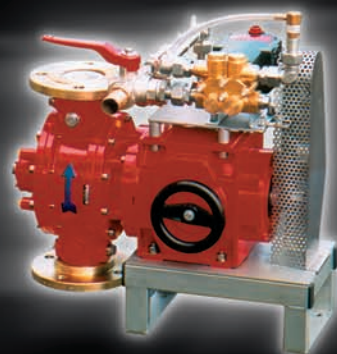
▲ **FIREDOS® FD 1000**
0.3-3-APP-5

Stepless adjustable admixture rate of 0.3 to 3.0%, main water flow max. 264 gpm, plunger pump, unit style "S" for sprinkler systems installation.



▲ **FIREDOS® FD 10000**
PP-3 Seawater

Main water flow: 2640 gpm
Admixture rate: 3% fixed
Operating pressure: Max. 232 PSI
Unit in seawater-resistant bronze-version



▲ **FIREDOS® FD 1000**
0.1-1-APP-F

FireDos® for vertical flow (from below to the top). Stepless adjustable admixture rate of 0.1 to 1.0%, main water flow max. 264 gpm, plunger pump, unit style "F" for fire-fighting trucks.



▲ **FIREDOS® FD 200 APP**

FIREDOS® : EFFECTIVE FIREFIGHTING

- ▶ Easy to install and operate
- ▶ Powered by water flow only
- ▶ Retrofitting into existing plants possible
- ▶ No electricity or electronics required
- ▶ Wide ranges of flows and proportioning ratios
- ▶ Sea-water proof versions for salt water applications
- ▶ Proportioning ratio fixed, step by step or continuously adjustable
- ▶ Versions for mobile, stationary or portable installations
- ▶ Can apply all gel or foam agents and fire-fighting chemicals
- ▶ The proportioning of the gel or foam agent is in direct relationship to the flow of water. It is independant from variations in flow and pressure.

GENERAL : INFORMATION

FireDos® is a solid mechanical proportioning system, that is powered by the water flow only. No further energy source such as electricity is required.

EASY : HANDLING

The FireDos® only needs to be connected to a water supply and to the chemical to be proportioned. The mixing ratio can be fixed, adjusted step-by-step or continuously adjusted. The only required maintenance includes refilling the chemical container and cleaning the FireDos®.

MODULAR : DESIGN

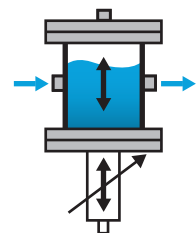
The FireDos® basically consists of hydraulic actuation and a proportioning pump. For low flow volumes the piston principle will apply (Figure 1), while for higher flow volumes the rotation principle applies (Figure 2, 3, 4). The achievable flow range is from 0.26 gpm up to 2,642 gpm (1 l/min up to 10,000 l/min). Different principles for the proportioning pump are available depending on whether precise adjustment, continuous proportioning flow, or high proportioning concentrations are required.

FLEXIBLE : USE

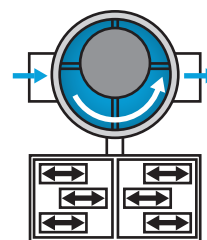
FireDos® can be used as a mobile, portable or fixed installation in fire fighting trucks or in sprinkler systems. It is easily integrated into an existing system, and no surge tank is required. When utilizing a FireDos®, the water storage tank or booster pump will not come into contact with fire fighting chemicals. All common types of spray nozzles and chemicals (including highly viscous liquids) can be used with a FireDos®.

SPECIAL : CIRCUMSTANCES

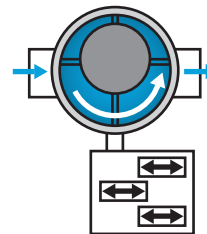
For over 10 years FireDos® has been producing proportioning systems for applications that require a particular technical performance or chemical resistance, including off-shore installations. FireDos® produces proportioning systems made from bronze, aluminium-bronze and stainless steel.



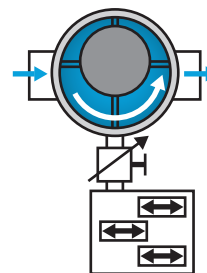
◀ **FIGURE 1**
Proportioning piston, continuously adjustable



◀ **FIGURE 2**
Piston pump, fixed adjustment



◀ **FIGURE 3**
Piston pump, step by step adjustable



◀ **FIGURE 4**
Piston pump, continuously adjustable

TECHNICAL : DATA

Max. flow rates	Figure 1 piston principle: 34 gpm (130 l/min); 52 gpm (200 l/min) Figure 2, 3, 4 rotation principle: 66 gpm (250 l/min); 132 gpm (500 l/min); 264 gpm (1,000 l/min), 422 gpm (1,600 l/min); 660 gpm (2,500 l/min); 1,056 gpm (4,000 l/min); 1,584 gpm (6,000 l/min); 2,112 gpm (8,000 l/min); 2,640 gpm (10,000 l/min)
Proportioning rates	with fixed adjustment: 0.3%; 0.5%; 1%; 2%; 3%; 6% with step-by-step adjustment: 0.15 + 0.3%; 0.25 + 0.5%; 0.5 + 1%; 0.7 + 1.4 + 2%; 1 + 2 + 3%; 2 + 4 + 6%; 1 + 2 + 3 + 4 + 5 + 6 % with continuous adjustment: 0.01...0.1%; 0.1...1%; 0.1...3%; 0.3...3%; 0.2...6%; 0.6...6%
Max. working pressure	flow rate: 34 - 52 gpm (130 - 200 l/min): standard version = 145 psi (10 bar), special version = 232 psi (16 bar) flow rate: 66 - 2,640 gpm (250 - 10,000 l/min): standard version = 232 psi (16 bar), special versions = 362 and 580 psi (25 and 40 bar)
Max. pressure loss	depending on type of FireDos® 21 - 29 psi (1.5 - 2.0 bar)
Max. working temperature	standard version = ca.122° F (50°C), special version = 176° F (80°C)
Materials	stainless steel, brass, POM, PVDF, acid-resistant aluminium, FKM, bronze for use in the off-shore applications

Other proportioning feeders and systems on request. We reserve the right to make technical modifications without prior notice.

THERMO TECHNOLOGIES, LLC 400 EAST BROADWAY AVENUE, SUITE 50
BISMARCK, ND 58501 USA

TEL: 701/258-8208
FAX: 701/258-7259

WWW.THERMO-GEL.COM